

464.

(MED. WALTZ)

# WILD FLOWER

- WAYNE SHORTER

Bb maj7      Ab-7      A7 (b9)

D-7

Bb maj7      Ab-7      A7 (b9)

D-7

G-7      C-7      F7

Bb maj7      Eb maj7

G-7      C7 (b9)

F-7      E7 (#9)

465.  
Wild Flower - P.2

E♭maj7

∩

A♭-7

A7 (♭9)



D-7



B♭maj7

∩

A♭-7

A7 (♭9)



D-7

∩

∩

∩



G-7

∩

C-7

F7

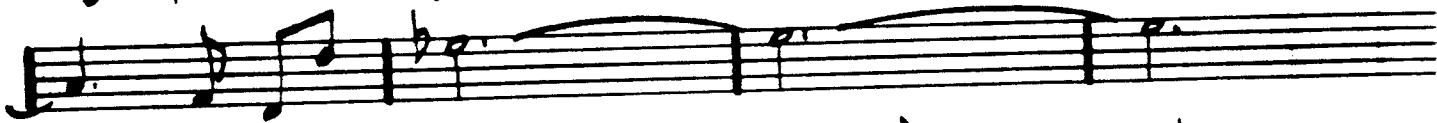


B♭maj7

E♭7

∩

∩



A♭maj7 (#11)

∩

A7 (♭9)

E♭7



D-7

∩

∩

∩



WAYNE SHORTER - "SPEAK NO EVIL"